

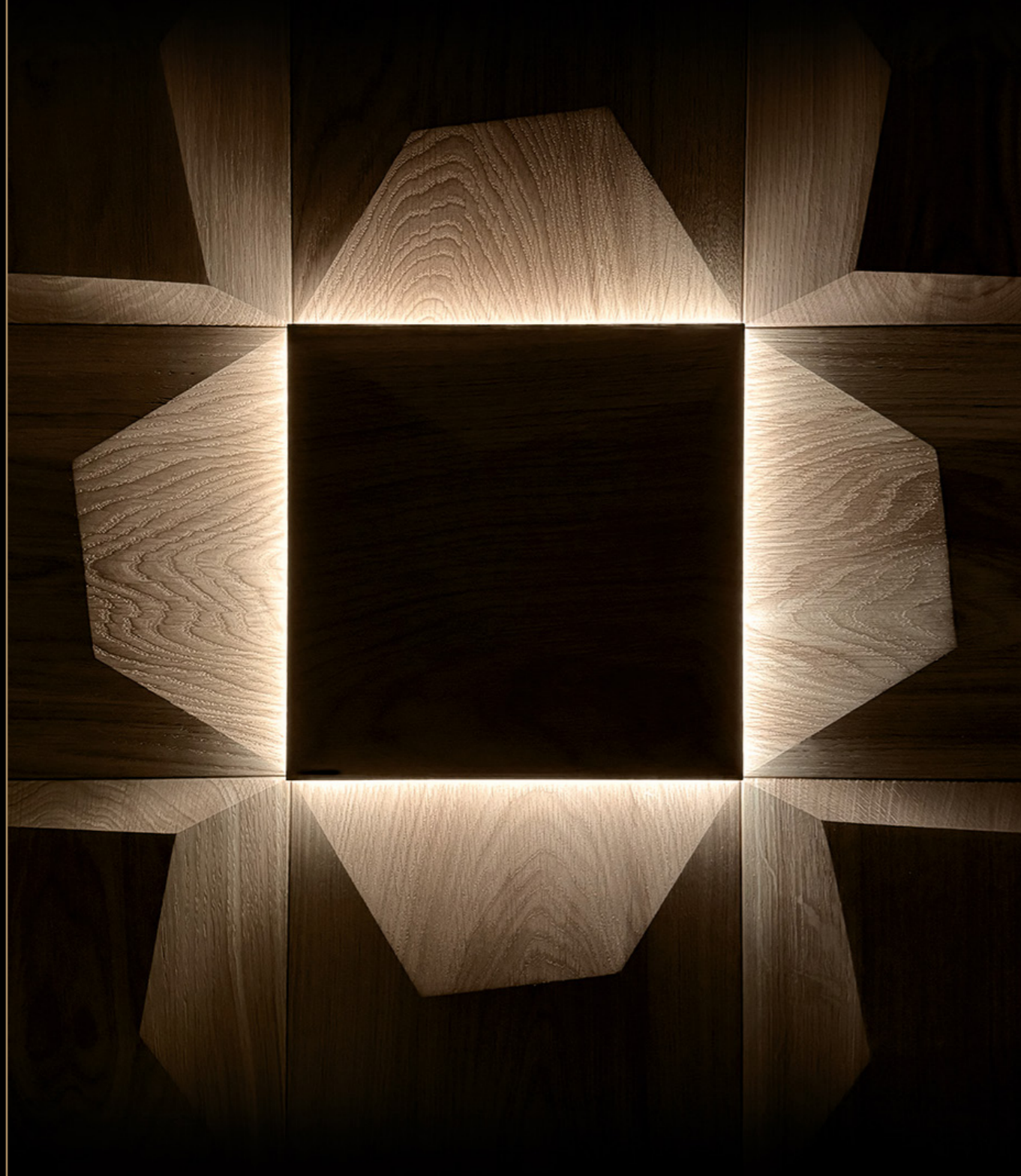


FORIVI[®]
AT WOOD

designed to
G L O W

FORIVI[®] AT WOOD

designed to
G L O W



The GLOW SERIES is a complement to FORM AT WOOD[®] wooden panels that will light up any interior.

Now you can add LED lighting to your wall decors, creating a bright and cozy space in any hue and with the intensity you need.

WHAT ARE THE GLOW SERIES PANELS?

s . 6 - 7

HOW DO THEY WORK?

s . 8 - 11

HOW TO ADD LIGHT TO YOUR PROJECT?

s . 12 - 13

HOW TO INSTALL THEM?

s . 16 - 17





WHAT ARE THE GLOW SERIES PANELS?

FORM AT WOOD® decorative panels are a beautiful addition to any wall, but what if you added a touch of light? See for yourself...

PRODUCT FEATURES :

- Possibility to add light to any of the EDGE, SMOOTH and FLAT collection panels
- Elegant, minimalist design - the lamps blend in seamlessly with the rest of the panels
- High-tech COB LED strips that guarantee a uniform line of light
- Easy installation, requiring no special skills or tools - plug & play
- Unlimited set-up possibilities - lamps can be arranged freely, without need to stick to a specific pattern or modules, you are only limited by the design of the panels
- With the remote control you can create your own ambience - dark and cozy or cool and bright, according to your mood, and adjust the light intensity

LIGHTS OFF



LIGHTS ON



FORIVI[®] AT WOOD

designed to
G L O W



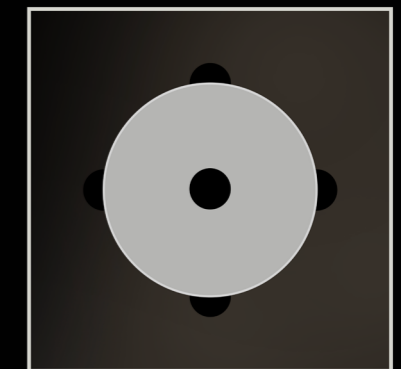
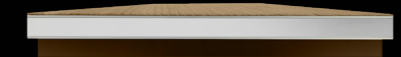
HOW DO THEY WORK?



Any panel from the EDGE, SMOOTH, or FLAT collections can be transformed into a stylish lamp. Simply choose a model, and we will integrate a lighting system into it.

The lamp's edge features an advanced LED strip that subtly illuminates the surrounding panels.

The underside of the lamp has a specially designed mounting system, allowing the lamp to be easily removed when needed. A mounting template is also included in the kit.



PRODUCT ADVANTAGES:

- Control via remote control or smartphone app
- Adjustable light hue ranging from 2700-6500K
- Smooth light intensity adjustment up to 1300lm
- Built-in lighting effects and ambience modes

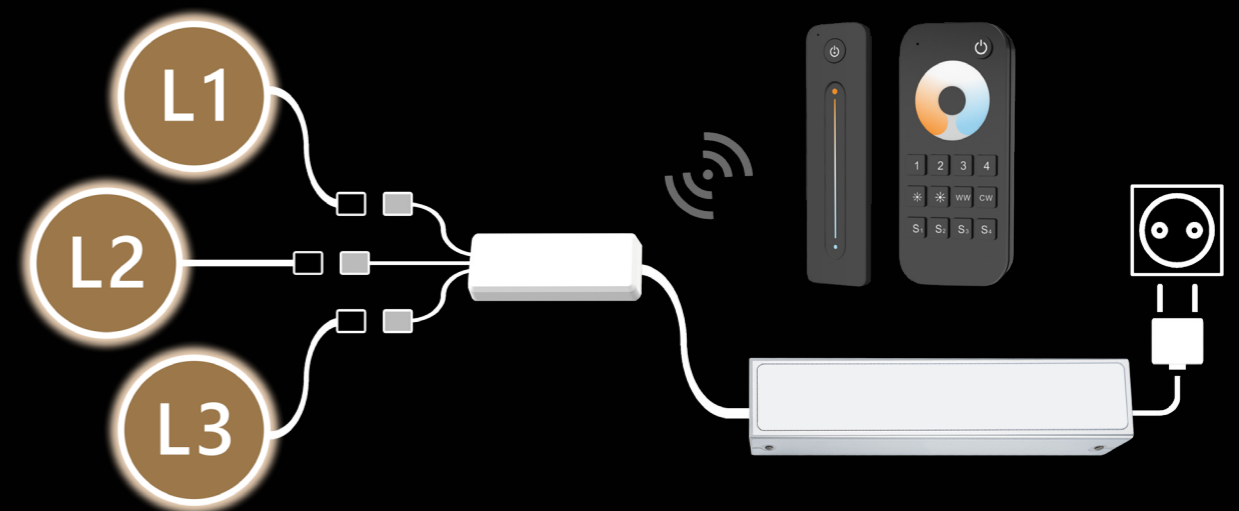


Diagram presenting the functioning of the lighting system. The lamps are linked to a controller that communicates wirelessly with both a remote controller and smartphone. The controller is powered by a suitable 24V power supply, which connects to a 110-230V power outlet.

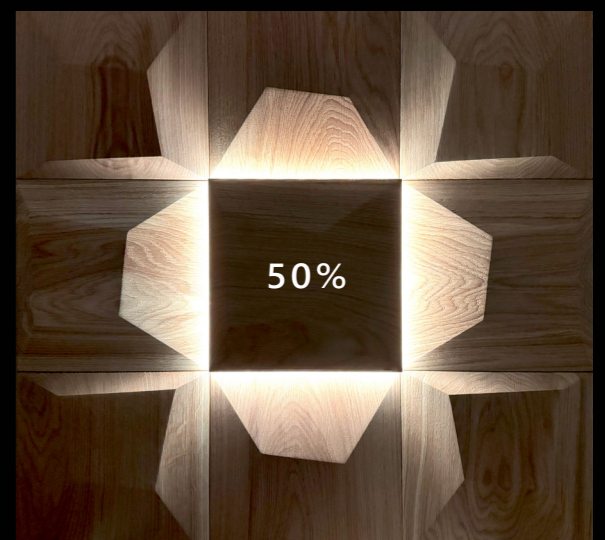
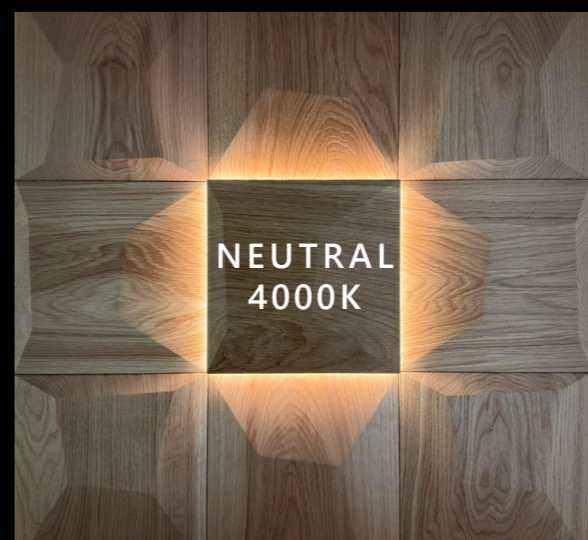
FORIVI[®] AT WOOD

designed to
G L O W



ADJUST THE POWER AND TEMPERATURE

With the mobile app or remote control, you can customize the illumination effect on your wall by adjusting the color and intensity of the light to your preference.



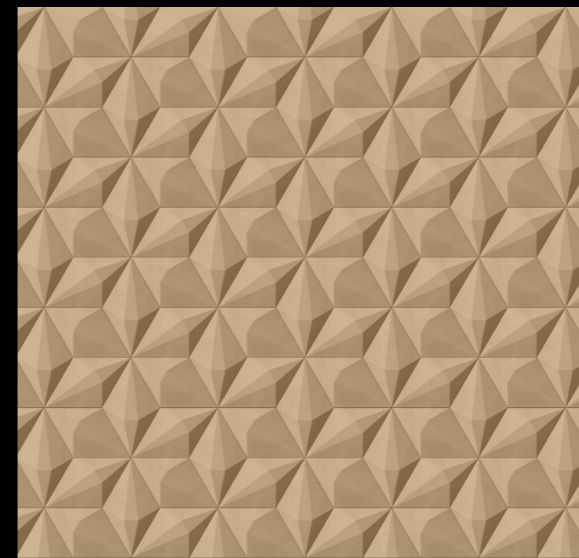
FORUM[®]
AT WOOD

designed to
G L O W

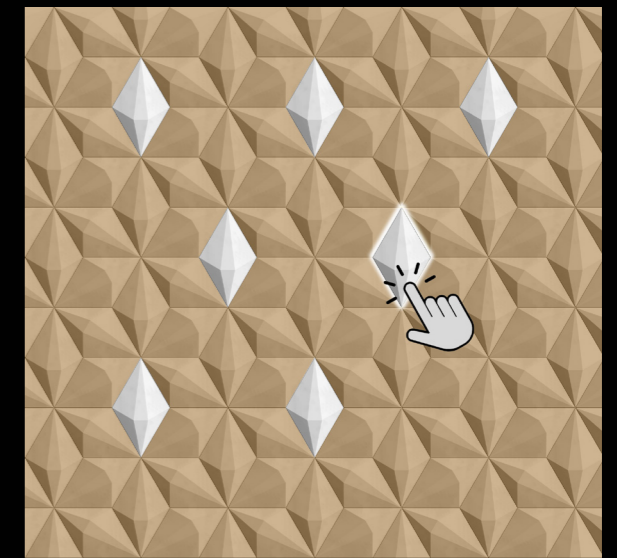


HOW TO ADD LIGHT TO YOUR PROJECT?

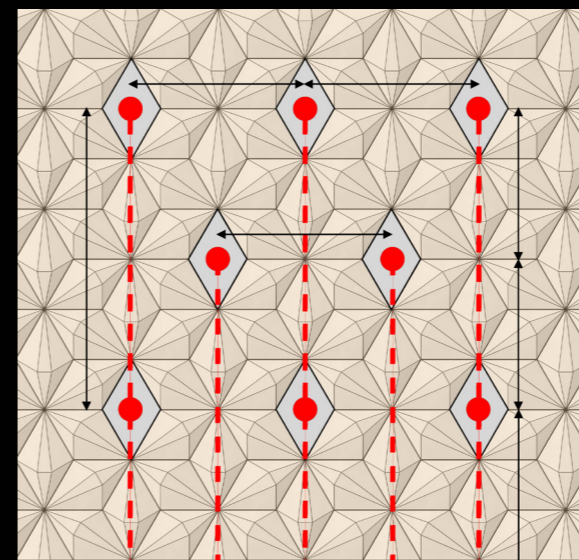
Below you will find a few steps that will guide you through the development of the project with the addition of lighting. To facilitate this process for you, we will support you at every stage, also providing necessary technical data for installers.



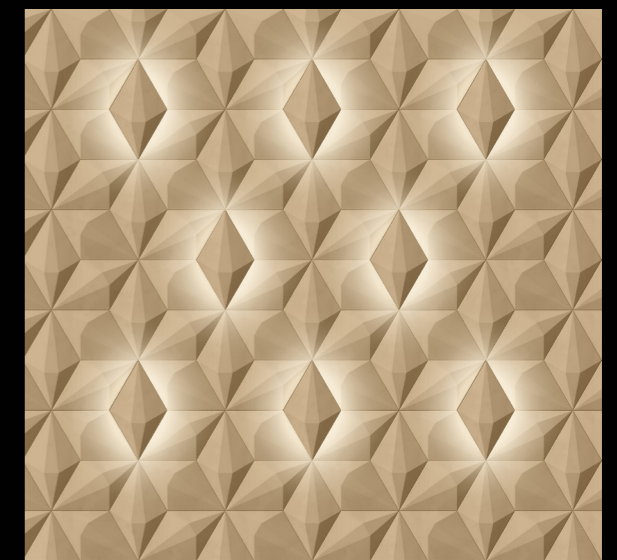
1. Select the panels you wish to use for decorating your wall.



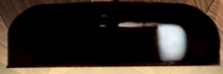
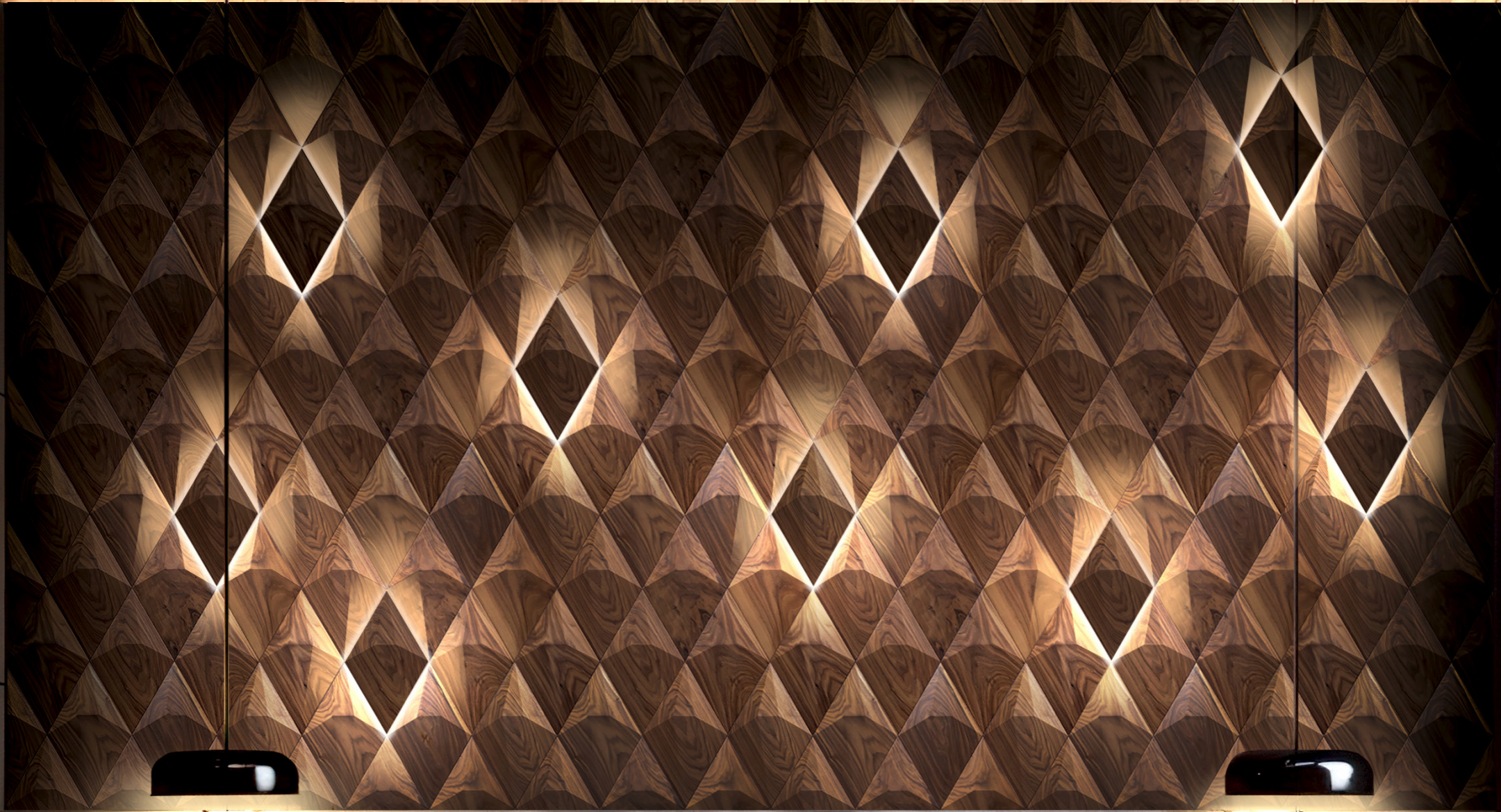
2. Decide which panels to light up, picking any locations and quantity of panels.



3 After your selection, our designers will create a customized wiring plan, adjusting wire lengths as needed for each panel.



4. You'll receive a basic visualization to preview the final effect, allowing you to approve the lighting design and place your order.

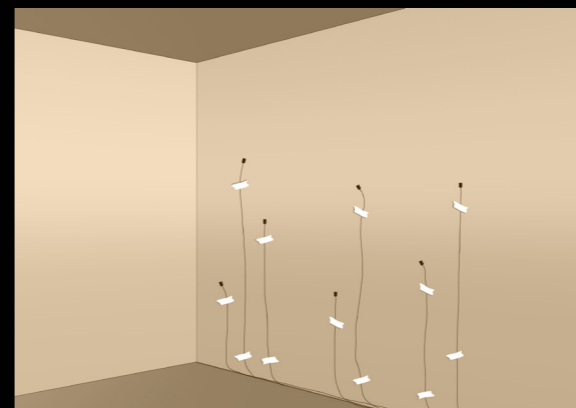




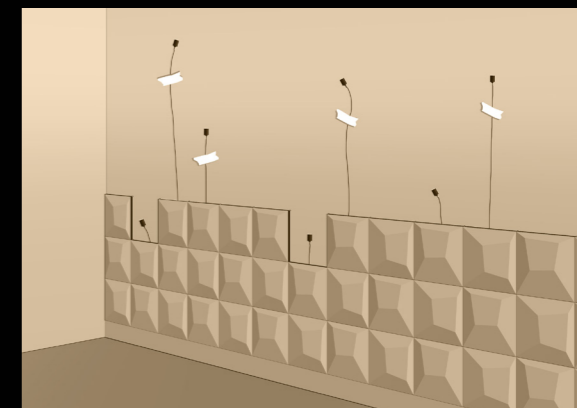
FORIVI[®]
AT WOOD

designed to
G L O W

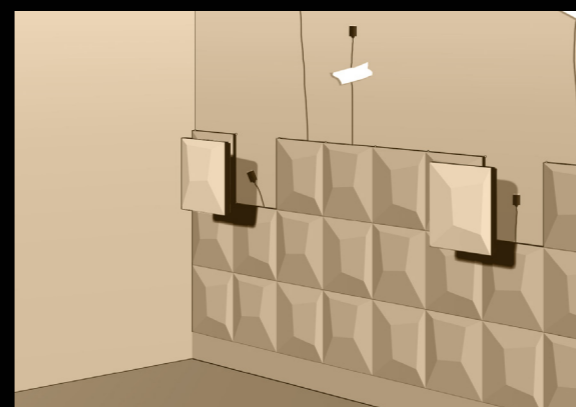
HOW TO INSTALL THEM?



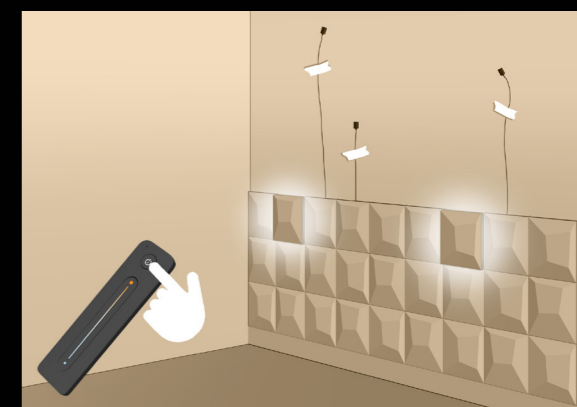
1. Arrange the cables in the appropriate locations, using painter's tape or temporary stickers to secure them in place.



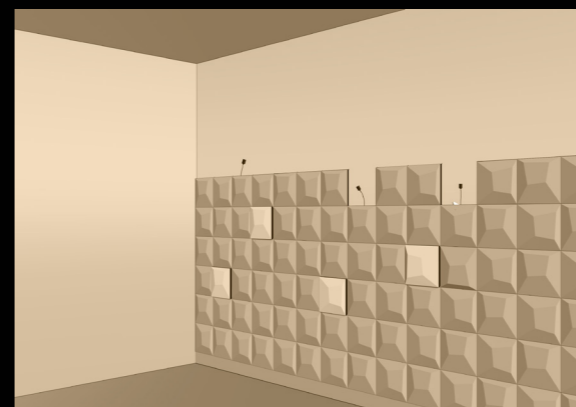
2. Install the panels following the standard instructions until you reach the designated location for the first LED panels.



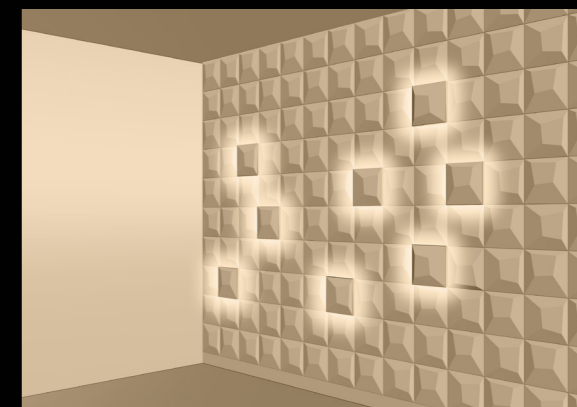
3. Remove the mounting tape protection, connect the cable to the plug, and then install the LED panel in the right place.



4. Connect the LED accessories to the power supply and make sure the panels light up when each one is installed.



5. Continue the installation in the same manner for the subsequent lighting points, repeating each step.



6. Once installation is complete, check all lighting functions.



If you are wondering how our wood panels
can brighten up your interior - write to us:

contact@formatwood.com



www.formatwood.com

FORM AT WOOD® has full exclusive rights (including property
intellectual rights) in the scope of all designs presented in the catalog.